



...connecting to the aftermarket

CT24VL13

Single DIN Fascia Plate for Volvo vehicles



Vehicle Application

Volvo V70, XC70: 2007-2011
Volvo S80: 2006-2012

Key Features

- This fascia kit allows the installation of an aftermarket head unit into a non din sized aperture
 - High quality finish designed to match the vehicle dashboard
 - Fascia kit supplied with mounting bracket

www.connects2.com

Designed and
Engineered
in the UK. 

The information provided in this document is subject to change without notice due to changes and/or improvements to the product/s.

ABOUT THIS PRODUCT

CT24VL13

Single DIN Fascia Plate (Matte Black) for Volvo vehicles.

INSTALLATION KIT INCLUDES

1x Single DIN Fascia Plate
1x Metal Bracket
4x M5 x 8mm Button/Hex Screws

TOOLS NEEDED

Screwdriver (T20 screws)
Bojo panel removers

PRIOR TO INSTALLATION

*Read the manual prior to installation. Technical knowledge is necessary for installation. The place of installation must be free of moisture and away from heat sources. Please ensure that the correct tools are using during the installation to avoid damage to the vehicle or product. **Connects2 can not be held responsible for the installation of this product.***

TECHNICAL SUPPORT

Connects2 Ltd. want to provide a fast and suitable resolution to any problems encountered during installation of this product. To get in touch with our dedicated technical support team, please fill in a ticket at support.connects2.com and provide as much information as possible.

FOLLOW US ON SOCIAL MEDIA

for all the latest updates



/CONNECTS2
Watch us on
YouTube



/CONNECTS2
Like us on
facebook



CONNECTS2LTD
Follow us on
instagram



@CONNECTS2
Follow us on
twitter



CONNECTS2LTD
Follow us on
linkedin



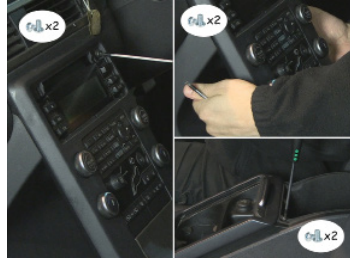
CONNECTS2BLOG.COM
Follow our blog on
wordpress

FITTING GUIDE

1. Use a panel removal tool to carefully pry the silver radio panel from the centre console. Once separated, pull it up and away from the dash, being careful not to break the down facing tabs at the bottom of the fascia.



2. Removing the panel will reveal 2 long screws located at the top of the main fascia panel. You will then find a further 4 screws toward the arm rest as well as behind the fascia panel that will need to be removed.



3. Pull the trim surrounding the gear stick up to reveal **another** 4 screws that will need to be removed.



4. Once all of the following screws have been removed, take hold of the main panel and firmly pull it away from the dashboard.

NOTE: The lower portion (signified by the red arrows) needs to be pulled toward the front of the car before being fully removed due to a set of plastic prongs.

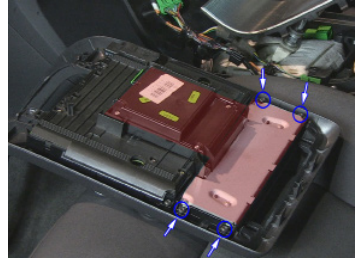


5. Disconnect the 4 wires located on the back of the dashboard panel. (Two of these connections will need to be done before the panel has been moved.)



FITTING GUIDE

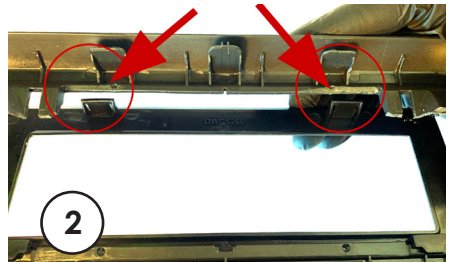
6. When the panel is fully disconnected, you will need to remove the LED screen to make way for the aftermarket head unit. To remove, undo the four screws, and pry away the **highlighted area** shown.



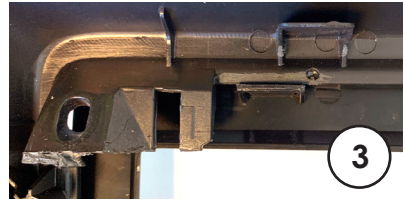
WHERE TO CUT CAR TRIM...



1. Cut bottom of clips where **highlighted**.



2. due to varying thicknesses of OEM dashboards some vehicles may need the area **circled** filing to make the clips locate and lock correctly.



3. Once cut and filed car trim should look like image 3 with fascia in place.

8. With the bracket attached, install the head unit with the necessary wiring and antenna adapter. When ready, replace the dashboard following the previous steps. When the main dashboard piece is fully screwed into place, take the fascia plate found within the kit and clip it into place like so to complete the install.

